

Shelley Wales
778 837 2265 | shelley@inethos.ca

Included: 6 unframed pieces for bin

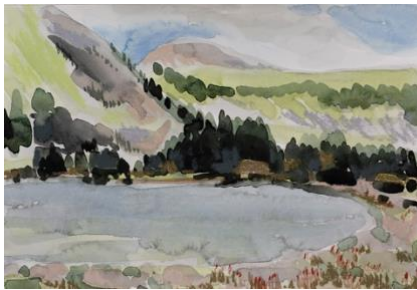


Shelley Wales – Angels Traverse Series
Stien Valley Nlaka'pamux Heritage Park, British Columbia

Wetlands Fringed by Forest
"Through forest and meadow we wound."

10 1/4 x 7 inches
Watercolour and soft pastel on paper

\$295- (unframed)



Shelley Wales – Angels Traverse Series
Stien Valley Nlaka'pamux Heritage Park, British Columbia

Why Don't We Spend the Night?
"There were whispers of a secret cabin on the edge of nowhere."

7 x 10 1/4 inches
inches
Watercolour and soft pastel on paper

\$295- (unframed)



Shelley Wales – Angels Traverse Series
Stien Valley Nlaka'pamux Heritage Park, British Columbia

Seeing Double
"It beckoned, so we lingered and like hobbits enjoyed a second breakfast."

7 x 10 1/4 inches
Watercolour and soft pastel on paper

\$295- (unframed)



Shelley Wales – Angels Traverse Series
Stien Valley Nlaka'pamux Heritage Park, British Columbia

Drainage

"It would be the last water we would see for 24 hours, so we filled our nooks and crannies till our packs brimmed and sagged. We were walking wave pools."

7 x 10 1/4 inches

Watercolour and soft pastel on paper

\$295- (unframed)



Shelley Wales – Angels Traverse Series
Stien Valley Nlaka'pamux Heritage Park, British Columbia

The Descent

"Looking back we realized there had been an easier way."

7 x 10 1/4 inches

Watercolour and soft pastel on paper

\$295- (unframed)



Shelley Wales – Angels Traverse Series
Stien Valley Nlaka'pamux Heritage Park, British Columbia

Home for the Night

"After a day of negotiations precipitous we slept like rocks in a nest of boulders"

7 x 10 1/4 inches

Watercolour and soft pastel on paper

\$295- (unframed)